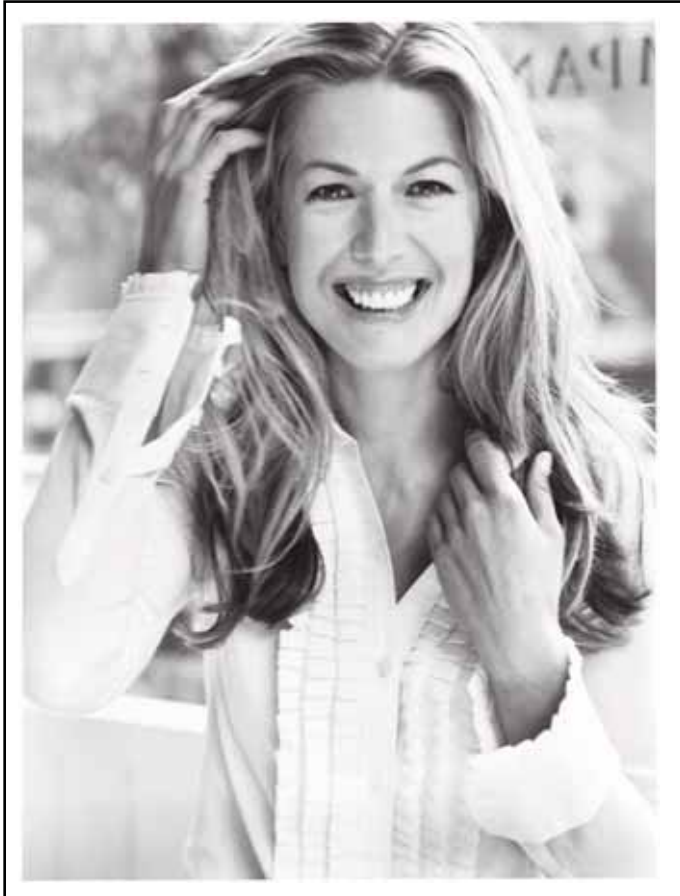


# liz claiborne



Liz Claiborne, Inc. designs and markets branded women's and men's apparel, accessories and fragrance products. Its current portfolio of brands includes most apparel and non-apparel categories, reaching consumers of various age, gender, size, and attitude, shopping or value preference. These products range from classic and traditional apparel to modern and contemporary wear.

The Company's principal facilities are located in the New York-area, with the executive offices, design,

sales, marketing and merchandising in New York City, and production, administration, distribution and finance in New Jersey. Liz Claiborne Inc. employs over 14,000 people worldwide.

Under Liz Claiborne's multi-channel distribution strategy, the brands are available at over 30,000 different retail locations throughout the world.

Badanco is the exclusive licensee for Liz Claiborne, Claiborne, Crazy Horse, Liz Home and Villager by Liz Claiborne Luggage in the United States, Canada, Mexico and Australia.



# liz clauborne

## *M*arina Collection Series # 874



*B*ring substance and style together with elegance with luggage from the Liz Claiborne Marina Collection. It represents the best of sophisticated design united with modern functionality and unmatched performance.



BADANCO LUGGAGE

ph: 973-812-1700

fax: 973-812-0900

web: [www.badanco.com](http://www.badanco.com)

# Marina Collection

Series # 874

## Features:

- Four-wheel "Quattro" system provides easy rolling in any direction
- Elegant and durable 1800 Denier poly fabric
- Soft grip, push button telescopic handles
- Hardware is elegantly finished in polished nickel
- Each suitcase expands 2.5" for extra storage when packing
- Interiors of suitcases feature multiple pockets including shoe pockets and removable see-thru water resistant accessory pouch
- Fully lined interior with signature pattern



**QUATTRO**  
WHEEL SYSTEM  
MANEUVERS IN ALL DIRECTIONS

## Colors:

- Navy/Blue
- Chocolate/Pink



Description Style #	Suggested		Color	Code	UPC
	Retail	Sale Price			
21" Exp. Rolling Carry-on #87420QX	\$200.00	\$99.99	Chocolate/Pink	52	047505293414
			Navy/Blue	66	047505296651
25" Exp. Rolling Suitcase #87424QX	\$220.00	\$109.99	Chocolate/Pink	52	047505293407
			Navy/Blue	66	047505296644
29" Exp. Rolling Suitcase #87429QX	\$240.00	\$119.99	Chocolate/Pink	52	047505293391
			Navy/Blue	66	047505296637
Rolling Duffel Bag #87422WD	\$160.00	\$79.99	Chocolate/Pink	52	047505293421
			Navy/Blue	66	047505296668
Shopper #87417	\$80.00	\$39.99	Chocolate/Pink	52	047505293438
			Navy/Blue	66	047505296675

